



+27 28 514 8500

info@swellenmun.co.za

swellenmun

www.swellenmun.co.za

+27 28 514 2694

49 Voortrek Street, Swellendam | P.O Box 20, Swellendam 6740

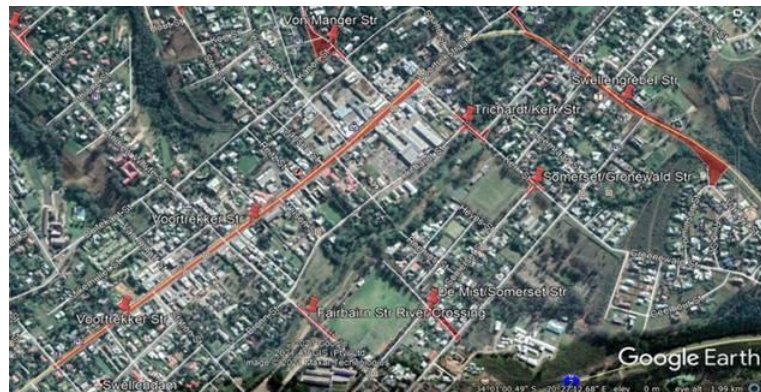
NOTICE: SWELLENDAM PRESSURE MANAGEMENT PROJECT

The Swellendam Municipality is in the process of embarking on a water pressure management project to address challenges with high levels of water loss and non-revenue water. A competitive bidding process was followed for the upgrade of the existing water reticulation network including new pipelines, pressure reducing valve chambers, isolating valve chambers, earthworks, road reinstatement and traffic control. The construction intends to reduce the pressure in the Swellendam water reticulation network. Three new pressure zones are planned for implementation as part of the Swellendam Municipality's water demand management strategy.

Construction will start in early August 2021 with planned completion by 04 November 2021. Traffic and movement in certain areas could be affected due to construction activities. The municipality intends to make every effort to reduce the impact on residents and businesses.

The areas to be affected by the upgrading of the water reticulation network include:

- Ashton Road and Die Rand Streets
- Intersection of Panorama Street and Murray Street
- Area around the Swellendam Water Treatment Facility
- Andrew Whyte Street; between the water treatment facility and Alice Street
- Koster Street
- Intersection of Von Manger, Kanon, Gelderblom and Buitekant Streets
- Voortrekker Street between Church Street and Murray Street
- Fairbairn Street River Crossing
- Corner of De Mist and Somerset Streets
- Bakenskap Reservoir to Swellengrebel road
- Moller Street
- Somerset Street and Groenewald Street intersection
- Trichardt Street and Church Street intersection



Municipal Manager
A.M. Groenewald
Notice number: